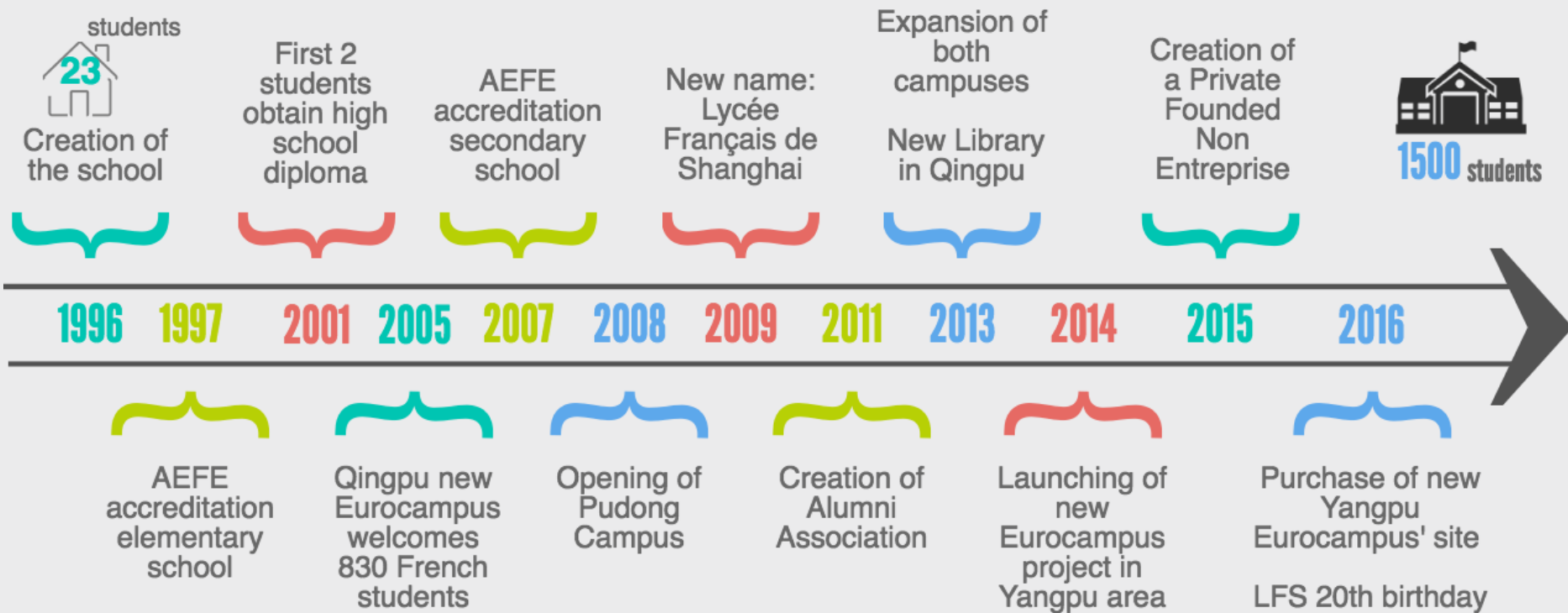




BIENVENUE AU LYCÉE FRANÇAIS DE SHANGHAI !
WELCOME TO THE FRENCH SCHOOL OF SHANGHAI!
欢迎来到上海法国学校!



A STORY THAT BEGINS IN 1996... WITH 23 STUDENTS!



CAMPUS OF QINGPU

Opening in **2005**

Facilities shared with



**DEUTSCHE SCHULE
SHANGHAI**

**20 km West of
downtown**



Back to school - rentrée 2016

CAMPUS OF PUDONG

Opening in **2008**

On the site of



**SHANGHAI GOLD APPLE
BILINGUAL SCHOOL**

**35 km East of
downtown**



PART OF A GREAT EDUCATION NETWORK



aefe

Agence pour
l'enseignement français
à l'étranger

336 000 pupils (37% of French nationality)

A network of 495 schools in 137 countries

Every year around 15 264 students pass the baccalauréat

Accreditation by the French Ministry of Education certifies that the teaching provided by the school complies with the demands, curricula, teaching objectives and organization rules of the French education system. All students from accredited schools can pursue their education in another French school without having to take an entry examination.

Schools are required to periodically prove that they meet accreditation criteria (acceptance of both French and foreign nationals, preparation for French examinations, employment of qualified French staff).

A SCHOOL MANAGED BY A PARENTS ASSOCIATION

COUNCIL MEMBERS



- Bernard PORA, President
- May KASSIS MORIN, Treasurer
- Camille GARNIER, General Secretary
- Philippe SNEL, Vice Président
- Jean-Marc BELOT, Construction
- Violaine ALLAIS, Construction
- Matthieu BEURAIN, Human Ressources



COMITÉ DE GESTION : KEY ROLE AND TASKS

- The « Comité de gestion » consist of elected Board members. They volunteer to work on both short and long-term management of the school
- To maintain and further develop our school so as to adapt to the changing educational environment (Specificities of LFS, Eurocampus Yangpu...)
- The « Comité de gestion » works closely with the headmasters, the administrative and education teams to take the common decisions
- Review and approve annual budgets prepared by the Finance department
- Anticipate and manage potential crisis situations
- The Annual General Meeting held in March 2017, is one of the most important event for the parents

A JOIN MANAGEMENT OF THE SCHOOL



aefe

Agence pour
l'enseignement français
à l'étranger

THE BOARD

School Administration

AEFE Management and Staff

Projet d'établissement

Conseil d'établissement

Conseil d'école

Admission

Finance

Human resources

General Services

IT

Purchasing

Communication

Construction

PEDAGOGY

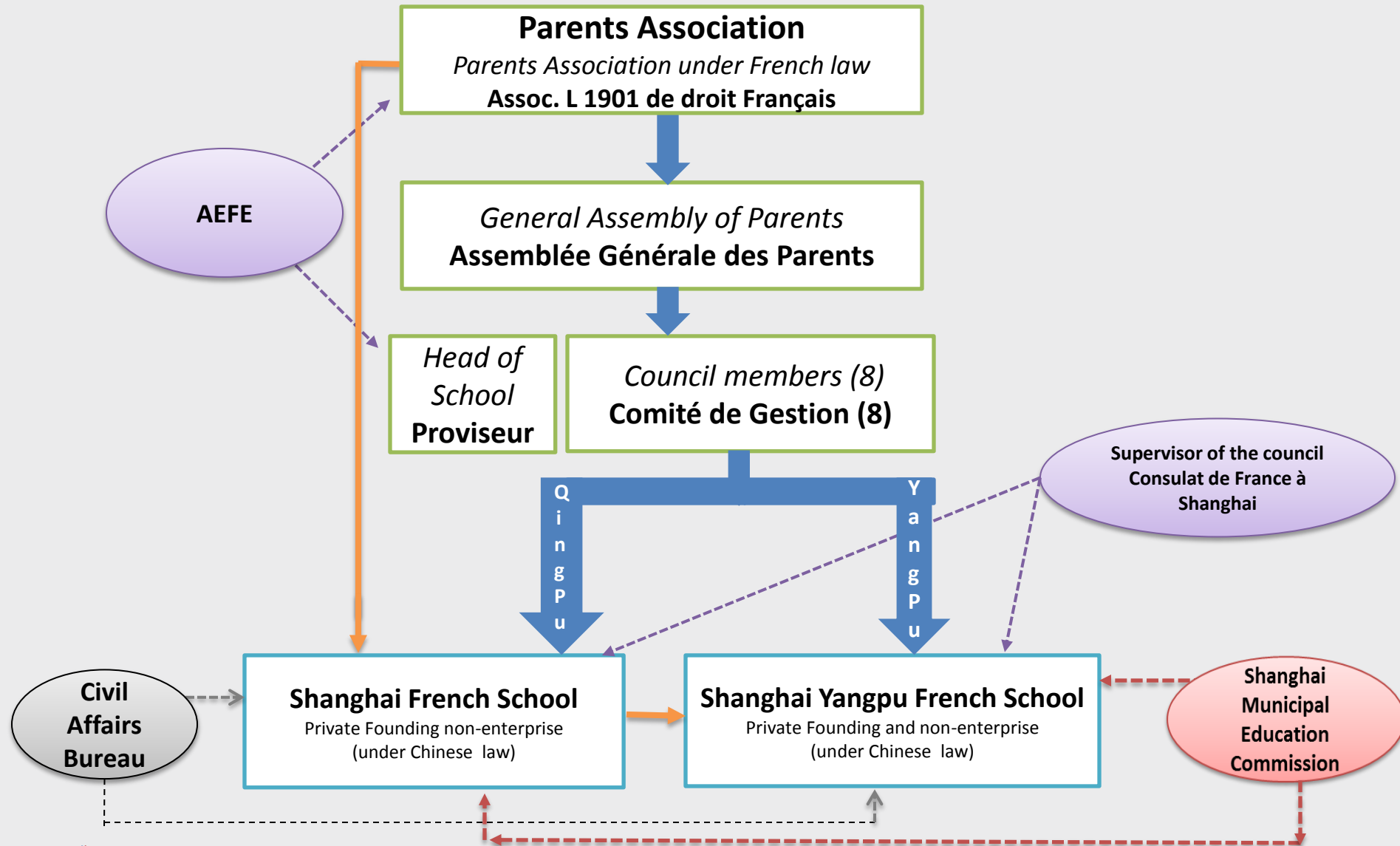
HEADMASTERS

OPERATIONS

CHIEF OPERATION OFFICER

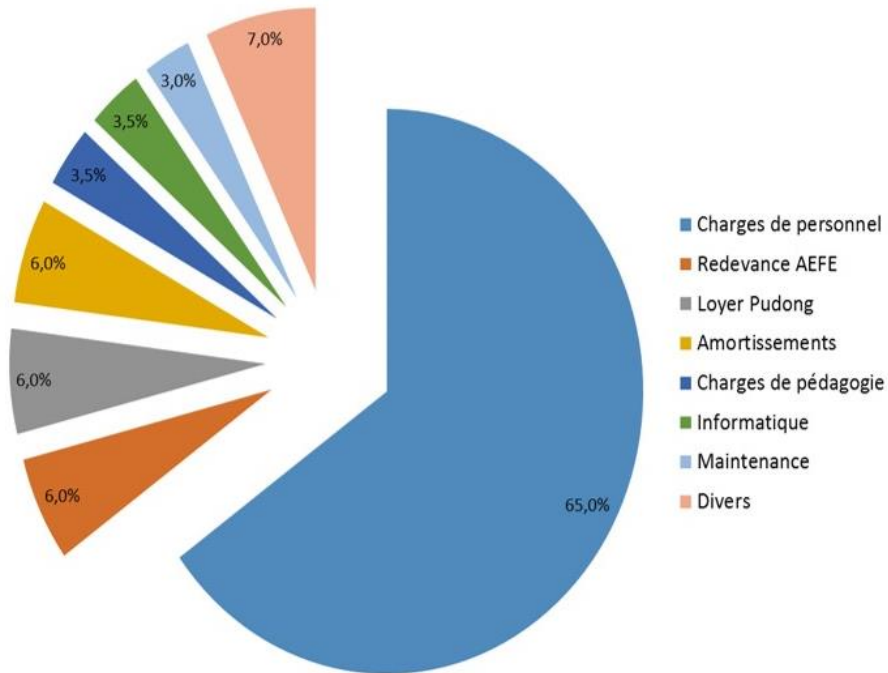
Back to school - rentrée 2016

OUR LEGAL STRUCTURE

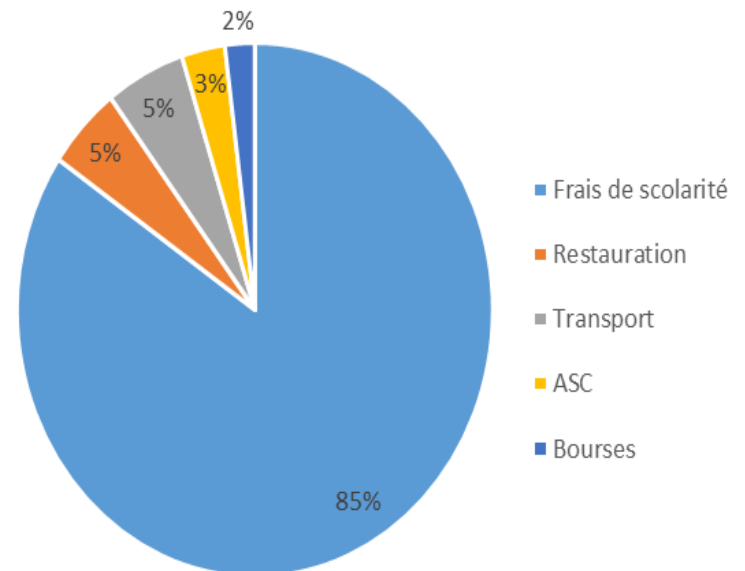


OUR FINANCIAL STRUCTURE

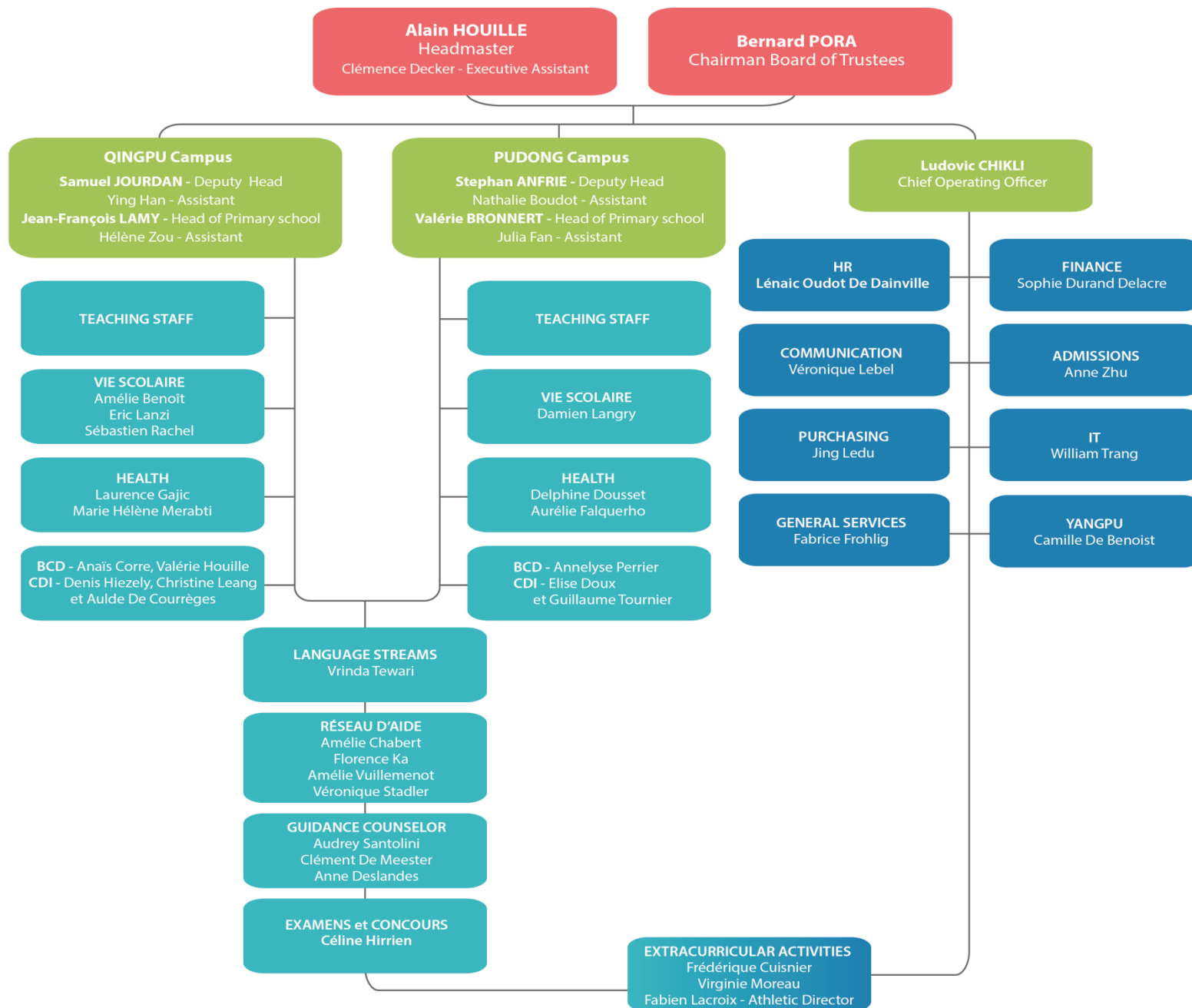
Our costs



Our resources



2016 ORGANIZATION



SCHOOL DIRECTION

Alain HOUILLE
Headmaster



CAMPUS QINGPU

CAMPUS PUDONG

Samuel JOURDAN
Deputy
Headmaster



Jean-François LAMY
Head of Primary School



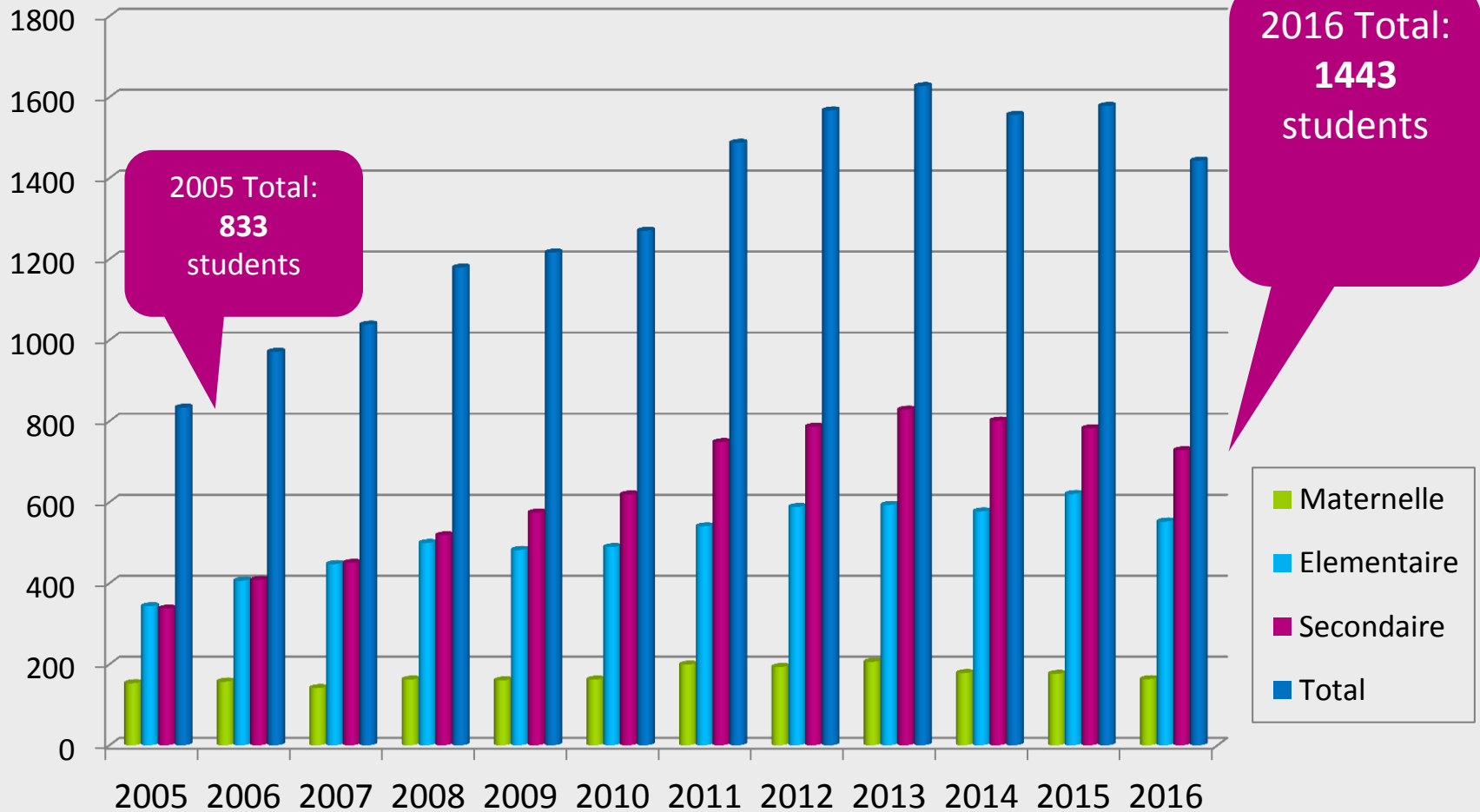
Stephan ANFRIE
Deputy
Headmaster



Valérie BRONNERT
Head of Primary
School



2016 NUMBER OF STUDENTS




LFS 2016 SCHOOL RESULTS

BACHELIERS 2016

100% SUCCESS **94%** HONORS

49% TB /highest honors

 **1** AEFE Bourse excellence major

Concours général des Lycées -
Chinese section  **1st prize**

DNB 2016

98% SUCCESS **91%** HONORS



53 of the 114 students took the international option and 98 % succeeded in it

DOMAINES ÉTUDE

32%  COMMERCE

14%  GÉNIE

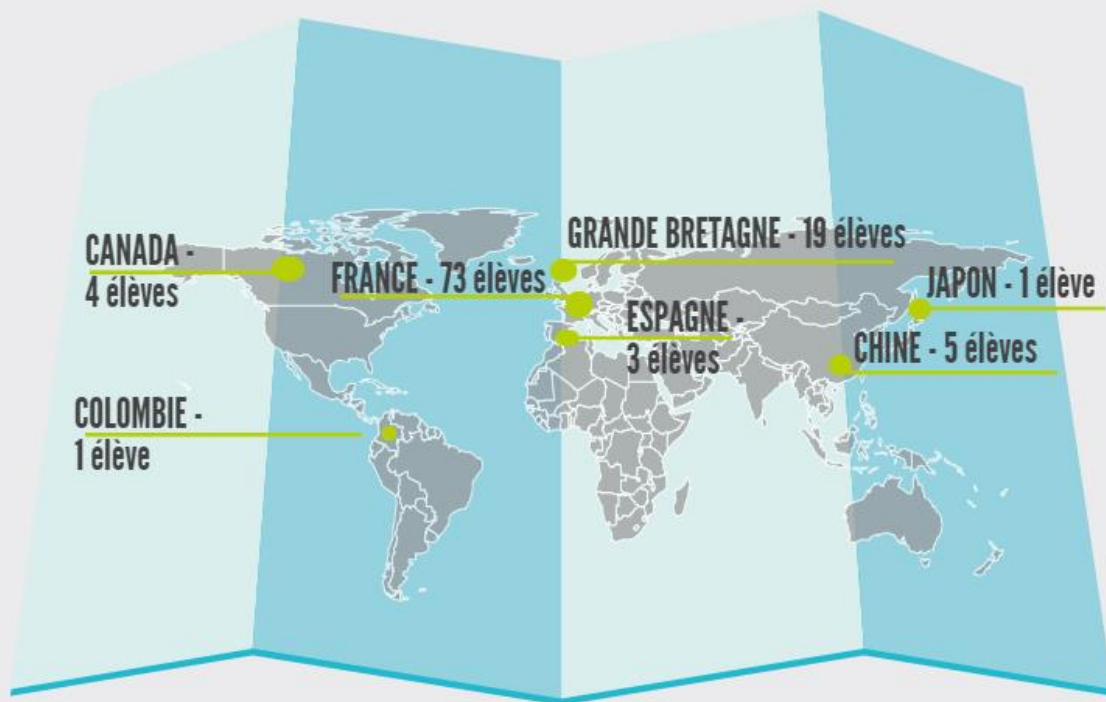
21%  SC. SOCIALES

11%  CPGE

10%  MÉDECINE

12%  ARTS DESIGN




OUR GRADUATES: WHERE DO THEY GO NEXT?



AUSSI...

4 élèves aux Pays-Bas, 1 en Belgique, 1 au Danemark, 1 en Italie

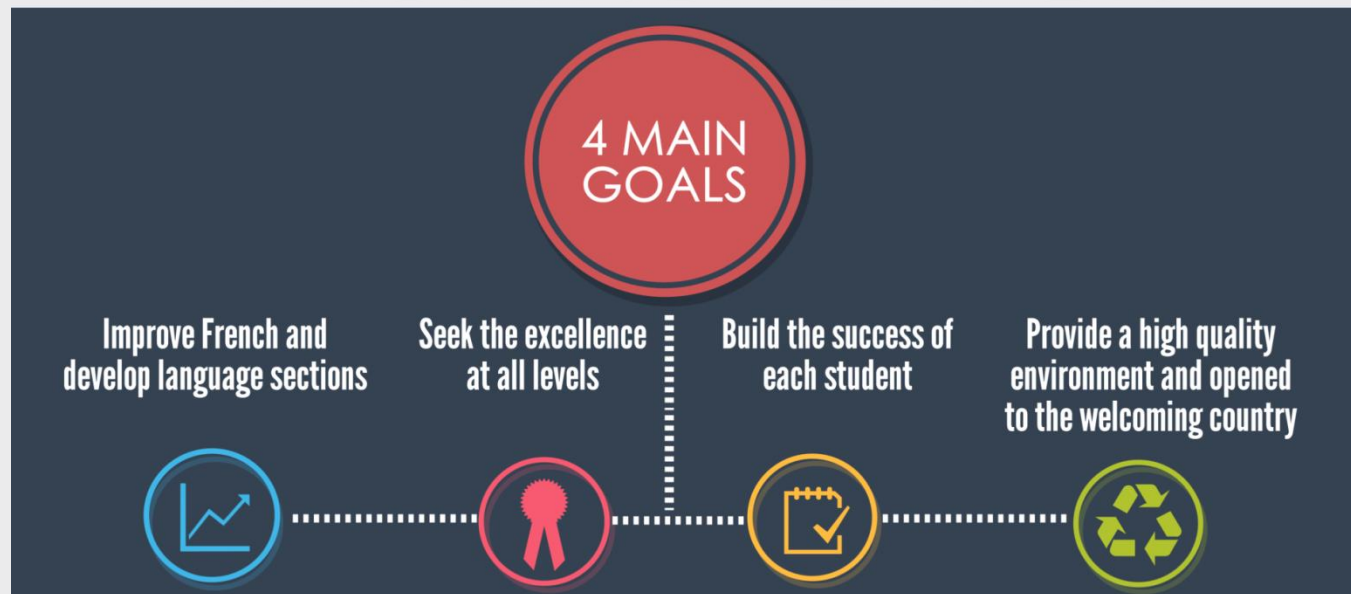
CERTIFICATIONS LANGUE

	ANGLAIS 	CHINOIS 	ESPAGNOL 
2011-2012	177	10	8
2012-2013	328	76	12
2013-2014	402	268	38
2014-2015	403	291	37
2015-2016	420	303	38

- LFS Centre d'examen Cambridge depuis **2013**
- **19** examinateurs homologués parmi nos enseignants classes de primaire

AN INTERNATIONAL SCHOOL... WITH A VISION !

SCHOOL PROJECT 2013-2016



PRIMARY								SECONDARY						
KINDERGARTEN			ELEMENTARY					MIDDLE SCHOOL				HIGH SCHOOL		
PS	MS	GS	CP	CE1	CE2	CM1	CM2	6ème	5ème	4ème	3ème	2nde	1ère	Term
General										General				
								Dual language		Orientale				
	International Chinese (SIC)												OIBC	
				Euro				European						
		Bilingual						International American (SIA)				OIBA		



Language coordinators / Campus

Stephan Anfrie - Pedagogical referent

SECONDARY

ENGLISH



Karine Darneaux
Language coordinator

Sophie Harif
Language coordinator

CHINESE



Anne-Laure Fournier
Noémie Sun
Language coordinator

Anne-Laure Fournier
Language coordinator

PRIMARY

Danio Danio
Language coordinator

Sarah Haber
Jeannine Lim
Language coordinator

Qingpu Pudong > Yangpu

Language coordinator

Anne-Laure Fournier
Language coordinator

Qingpu Pudong > Yangpu

GERMAN



SECONDARY

Matthias Schafer
Language coordinator

Qingpu
Pudong > Yangpu

SPANISH



Céline Lanza
Language coordinator

Qingpu
Pudong > Yangpu

Vrinda Tewari

Responsible for language streams



Céline Hirrien (exams)

中文

Anne-Laure Fournier (chinese)



A DYNAMIC SCHOOL

EXTRACURRICULAR ACTIVITIES



Sport and cultural activities offered to both primary and secondary students. Participation in SISA and SISAC (Shanghai International Schools Activities Conference)

BUREAU DES ANIMATIONS



Managed by a group of dynamic parents, it organizes events and projects for all LFS students

CULTURAL AND SD ACTIVITIES



In order to promote openness and to educate our students to the challenges of our host country. Ex: Habitat for Humanity, The Giving Tree, Course contre la Faim, school exchanges...

AEFE PROJECTS



Sport competitions and cultural initiatives between the schools that are part of AEFE network. Ex: Championnat d'Asie de natation, Coupe de rugby des écoles françaises d'Asie-Pacifique, Osons l'opéra...



2016 NEW FEATURES QINGPU





Improvements/ maintenance



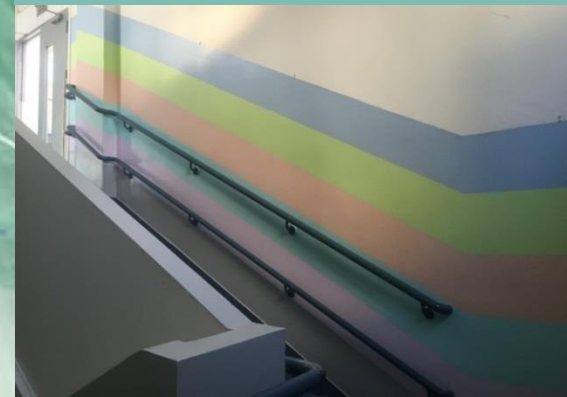
2016 NEW FEATURES PUDONG



New offices for RH, ACHAT, SG



Improvements of the
canteen - licence FDA



YANGPU

A NEW LOCATION FOCUSED ON EDUCATION AND NEW TECHNOLOGIES



A NEW EUROCAMPUS ON YANGPU DISTRICT



Surperficie
terrain de
56 000 m²

CENTRE SPORTIF
7 000 m²
PISCINE
25 M

STADE

THÉÂTRE
550 places
CANTINE
1 200 m²

LFS :
1000 ÉLÈVES
de la maternelle au lycée
42 salles de classe
12 salles de langue
7 laboratoires
800 m²
BIBLIOTHEQUE

Back to school - rentrée 2016

FIND US ON...

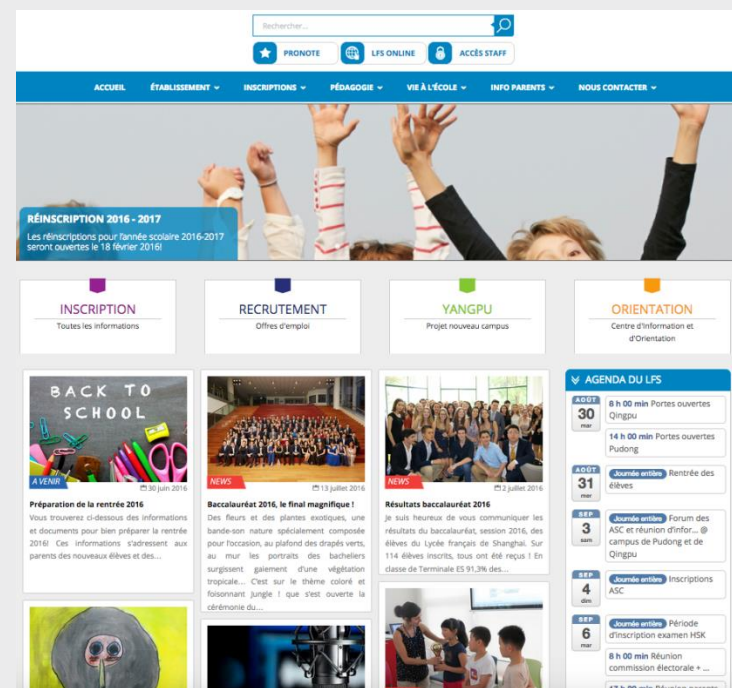
School will change their email on September 5th 2016
from: surname.name@ef-shanghai.com
to: surname.name@lyceeshanghai.com



www.lyceeshanghai.com



Wechat:
LFShanghai





**Bonne rentrée à tous !
Have an enthusiastic school year !**